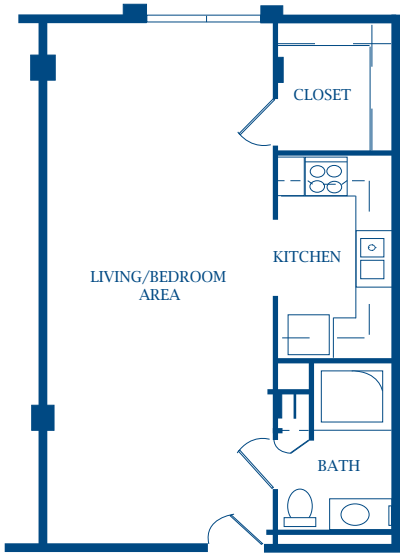


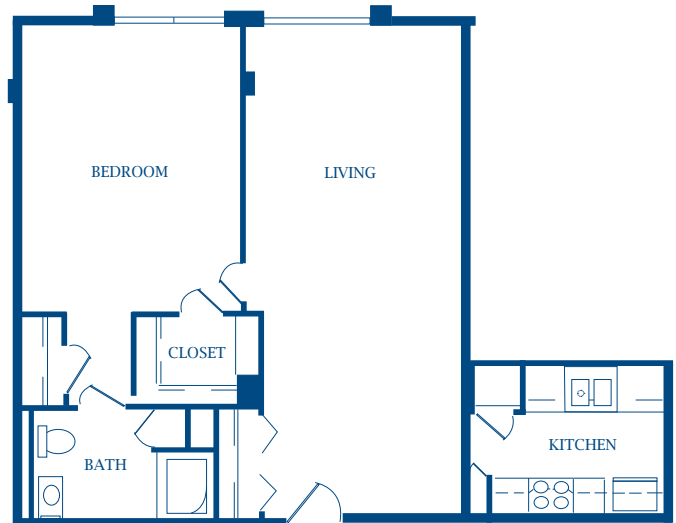
APARTMENT FLOOR PLANS



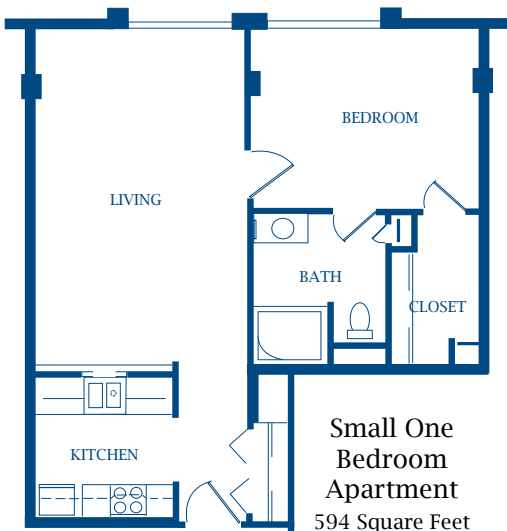
Apartment Living at Presbyterian Manor



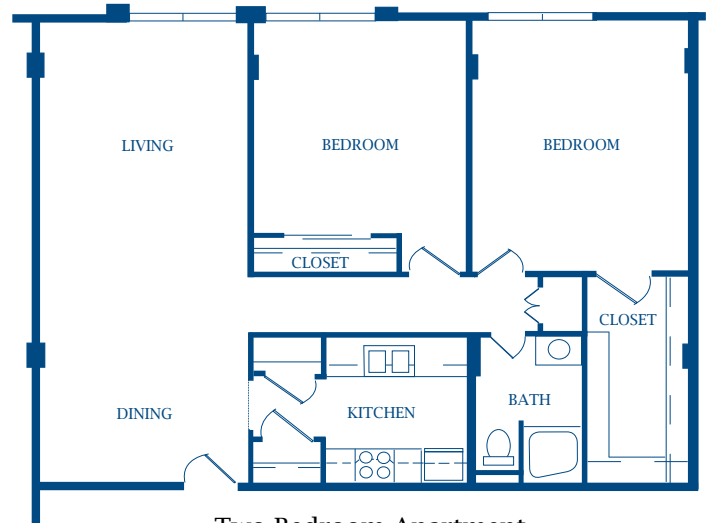
Efficiency Apartment
516 Square Feet



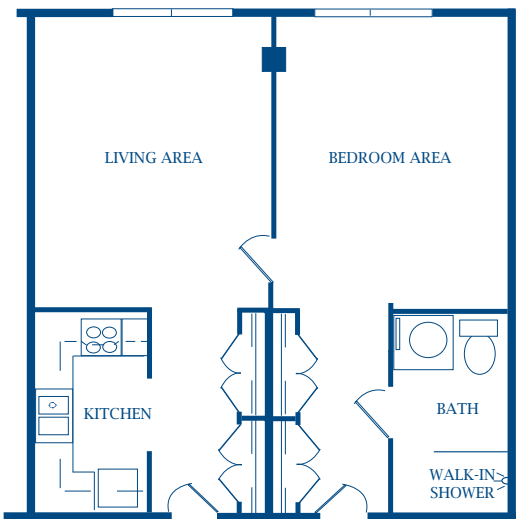
Large One Bedroom Apartment
781 Square Feet



Small One Bedroom Apartment
594 Square Feet



Two Bedroom Apartment
1031 Square Feet



Studio Apartment
688 Square Feet

APARTMENT AMENITIES



Apartment Living at Presbyterian Manor

Your monthly rental charge provides for the following amenities:

For Apartment Residents

- A private apartment of your choice
- One meal each day in the Manor Dining Room (special dietary needs can be accommodated)
- All utilities: heating and air conditioning, electricity and water
- Personal telephone
- Basic cable television service
- Weekly light housekeeping
- Weekly laundry service (machine washable), ironing and flat linen service
- Individually controlled thermostat
- Private bath (tub with shower, stool and lavatory) with grab bars for safety
- Complete kitchen (stove top, oven, refrigerator and garbage disposal)
- Spacious walk-in closet
- Emergency call system
- Wall-to-wall carpet and draperies which meet safety standards for flame spread resistance and smoke generating factors
- Door lock which will not be opened by anyone without your explicit permission
- Five free days each year in the Perkins-Prothro Health Care Center for short-term illnesses with around-the-clock nursing care - there is an additional cost for in-patient care beyond five days each year

Are there any additional costs?

Additional costs are optional, but examples might include long distance telephone calls, transportation to a personal doctor's appointment, use of the beauty salon, use of the overnight guest rooms, covered parking space, tray meal delivery service to your apartment, or additional meals for yourself or guests who dine with you in the dining room.

Community Amenities for All Residents

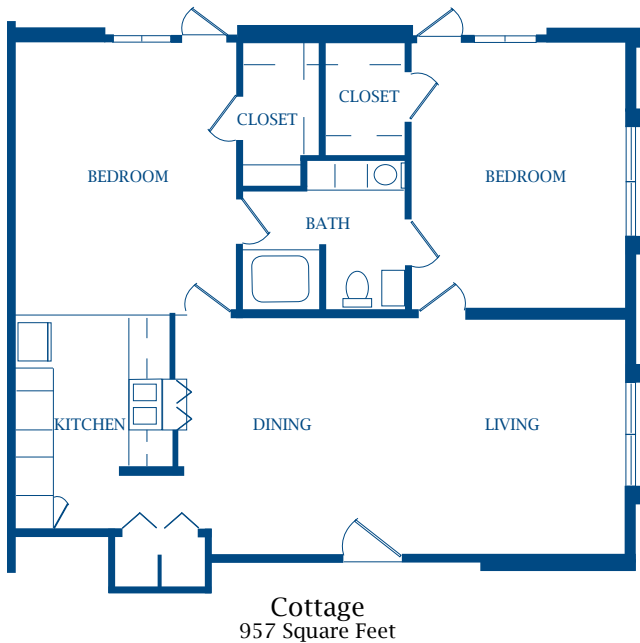
As a resident, you have complete use of the dining room, lounges, recreation areas and grounds. Presbyterian Manor in its entirety is your home and includes the following amenities:

- Scheduled transportation to area shopping, community events and day trips
- Complementary resident laundry rooms
- Spacious lounge area, multiple recreation rooms and comfortable library
- Computer resource center with access to internet
- Chapel services
- Social events, outings and educational opportunities
- On-site ATM machine
- Priority admission to Perkins-Prothro Health Care Center

COTTAGES



Cottage Living at Presbyterian Manor



Your monthly rental charge provides for the following amenities:

For Cottage Residents

- A private apartment of your choice
- All utilities: Heat and air conditioning, electricity and water
- Personal telephone
- Basic cable television service
- Five free days each year in the Perkins-Prothro Health Care Center for short-term illnesses, with around-the-clock nursing care - there is an additional cost for in-patient care beyond five days each year
- Emergency call system
- Wall-to-wall carpet and draperies which meet safety standards for flame spread resistance and smoke generating factors
- Door lock which will not be opened by anyone without your explicit permission
- Grounds maintenance

Are there any additional costs?

Additional costs are optional, but examples might include long distance telephone calls, transportation to a personal doctor's appointment, use of the beauty salon, use of the overnight guest rooms, covered parking space, tray meal delivery service to your apartment, or meals for yourself or guests who dine with you in the dining room.

Community Amenities for All Residents

As a resident, you have complete use of the dining room, lounges, recreation areas and grounds. Presbyterian Manor in its entirety is your home and includes the following amenities:

- Scheduled transportation to area shopping, community events and day trips
- Complementary resident laundry rooms
- Spacious lounge area, multiple recreation rooms and comfortable library
- Computer resource center with access to internet
- Chapel services
- Social events, outings and educational opportunities
- On-site ATM machine
- Priority admission to Perkins-Prothro Health Care Center